

# SEW YOUR OWN METRO CARD HOLDER!

## Materials

Fabric cutting scissors

Dressmaker pins

All purpose thread to match your fabric

$\frac{1}{4}$  of a yard of fabric will make approx. 7 MetroCard holders. Suggested fabrics that are easy to sew: denim, felt, light-weight cottons and fake leather. You can also make a heat transfer right from your computer and print it onto your fabric.

For the necklace - 40" long double face satin ribbon,  $\frac{1}{8}$ " wide (you can also use twill tape, sequins by the yard, or suitash)

Sewing machine or hand sewing needles

Embroidery floss, if you are going to hand embroider the skyline



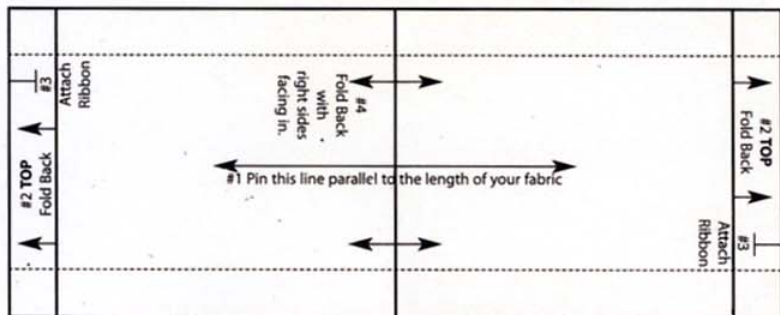
## Cutting and sewing instructions

**Step 1** - Pin the pattern down making sure the arrow on the pattern is parallel to the length side of your fabric. Then cut out the pattern. (After cutting out the pattern, trace the skyline onto the right side of the fabric. Using a basic embroidery stitch you can hand embroider the skyline onto your MetroCard holder)

**Step 2** - Fold back the "top" ends of the cut fabric  $\frac{1}{2}$ ".

**Step 3** - Place each end of the ribbon at the notches marked "attach ribbon" on "top" ends of the cut fabric. Then, tack the ribbon down.

**Step 4** - Fold the cut fabric in half with the right sides facing in. Sew the sides of the fabric together, making sure you are sewing on the wrong side of the fabric. You have  $\frac{1}{2}$ " seam allowance as your sewing line. When you finish sewing these seams, trim  $\frac{1}{4}$ " away from your  $\frac{1}{2}$ " seam allowance to eliminate bulk. Turn the right side out and gently poke the corners out using the tips of your scissors.



Instructions and pattern by  
Elissa K. Meyrich of  
SewFastSewEasy.com

Please note that this pattern is at half size.  
Use a photocopier to scale it up by 200%